

**cd2e - the expert center
for the development
of eco-enterprises**



29/07/2014



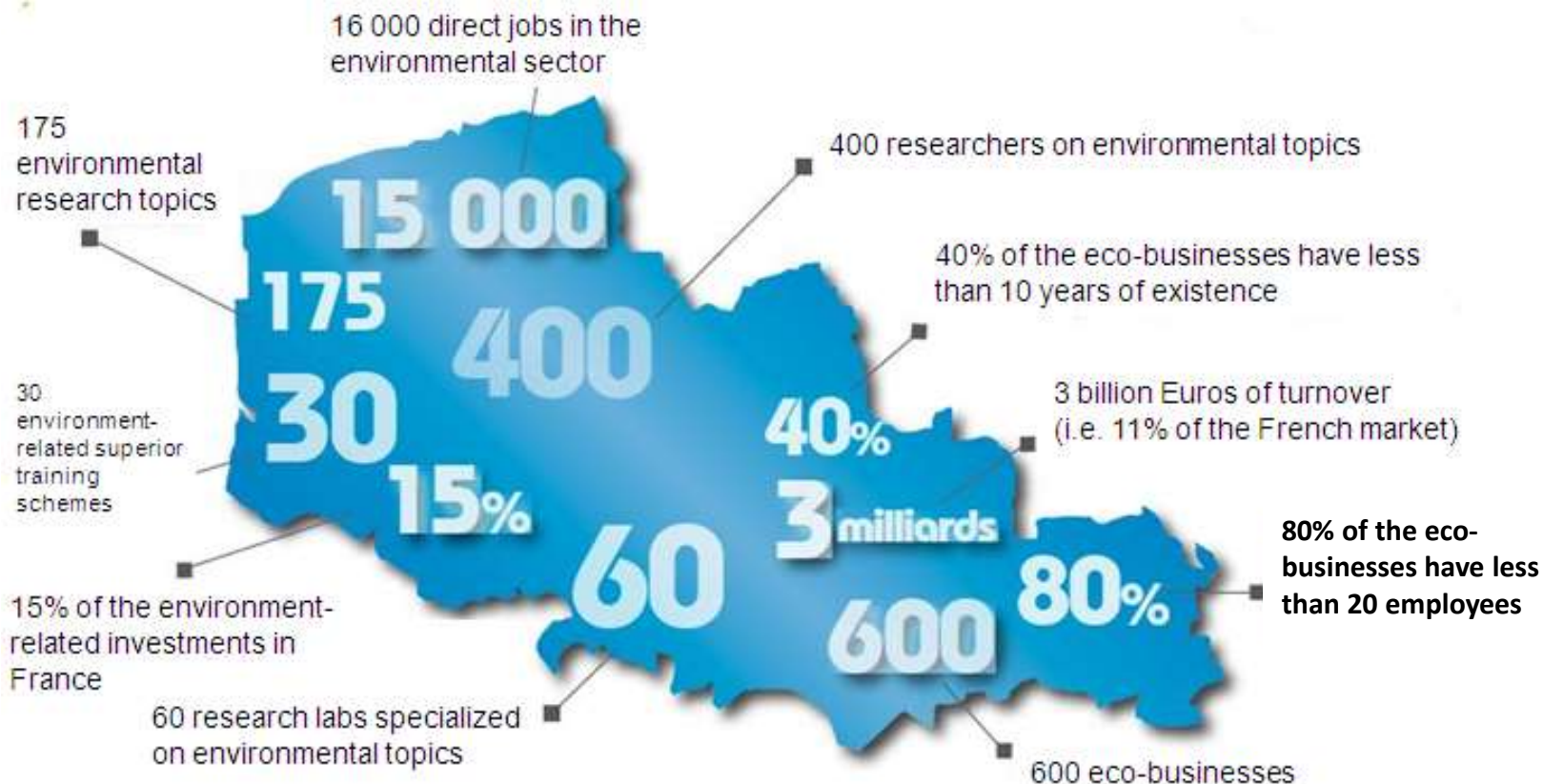
WHERE WE ARE



Nord-Pas de Calais:

- *4.2 million inhabitants*
- *4th economic region in France*

CLEANTECH IN NORD-PAS DE CALAIS



= important industrial sector!

BUT ...

40% of the regional cleantech companies have less than 10 years
of existence

80% of the companies have less than 20 employees

-> these companies are too young and too small and need
support for their development

WHO WE ARE

- *Cluster, created in 2002*
- *Public organisation, 80% of budget from the Regional Council of Nord-Pas de Calais*
- *Brings together enterprises, research labs and public authorities*
- *Main objective: contribute actively to the development of eco-activities and eco-enterprises in Nord-Pas de Calais*
- *Yearly budget: 3 000 000 EUR*
- *25 employees, i.e. experts on waste/recycling, water, polluted soils, renewable energies, eco-construction, life cycle analysis*

EXAMPLE: LUMIWATT



*Solar test center
LUMIWATT*

EXAMPLE: THEATRE OF ECO MATERIALS



Ecorché ossature bois



Ecorché voile béton



Ecorché béton de chanvre



Ecorché panneau massif contre-collé



Ecorché maison 1930



Ecorché parpaing brique

EXAMPLE: VILLA VENIR



6 new houses
with low
energy
consumption

EXAMPLE: REHAFUTUR

rēhafutur
ensemble, agissons pour un habitat responsable

Renovation of an old house with
ecological materials



EXAMPLE: INTERNATIONAL COOPERATION

Direct business cooperation with local partners on important markets through the presence of representatives of the cd2e in:

- Brazil (South America)
- Canada (South America)
- Poland (Eastern Europe)
- very soon: Morocco or Tunisia (Maghreb)

EXAMPLE: LCA CONFERENCE



*November 5-6, 2014
Lille, France*

*300 LCA in practice experts
from all over the world*

INVESTMENT OPPORTUNITY



*The third industrial
Revolution*

*Jeremy Rifkin
visiting the cd2e,
October 2013*

THE MASTERPLAN

1. *Houses produce energy*
2. *Houses become energy efficient*
3. *Energy is stocked intelligently*
4. *Development of intelligent grids*
5. *Electromobility*
6. *Circular economy*
7. *New business models*

THANK YOU FOR YOUR ATTENTION



cd2e

Rue de Bourgogne - Base 11/19 - 62750 Loos-en-Gohelle

Tél.: +33 (0)3 21 13 06 80 Fax: +33 (0)3 21 13 06 81

www.cd2e.com

